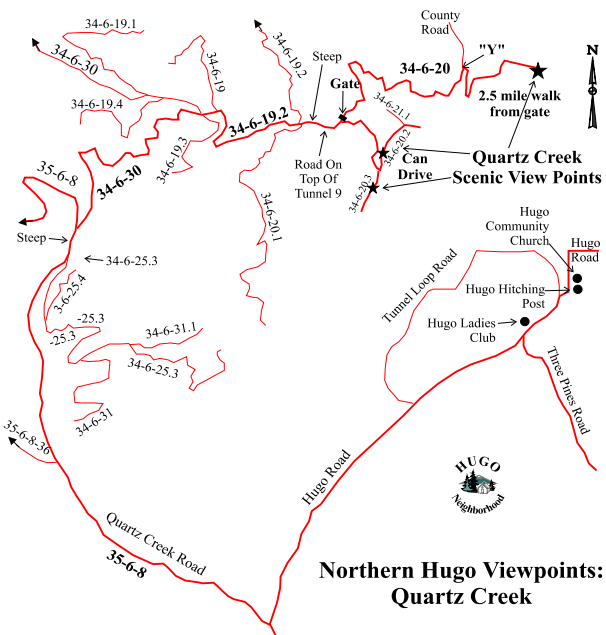


Quartz Creek Route 1 Viewpoint Elevation 2,400'

There are lots of safe and comfortable scenic view points to discover picturesque Hugo from the air. Well, from the viewpoints looking down, it feels like being in the air, sorta.

The Quartz Creek Viewpoint is about 14 plus vehicle miles and 40 minutes from the Hugo I-5 interchange parking area (see map). The Grave Creek Hills are a dominate feature in the Hugo neighborhood. At the highest they are 2,748' high and named after Grave Creek.



Northern Hugo Viewpoints:
Quartz Creek

Grave Creek Hills Elevation 2,748'

Vehicle Travel Miles

0.0	Hugo I-5 Interchange Parking. Elev. 1,160'
0.7	Hugo I-5 Interchange to Junction of Monument Drive & Three Pines Road
2.5	Junction of Three Pines Road & Hugo Road
5.2	To Junction of Hugo Road & Quartz Creek Road
7.2	Junction of 35-6-8 & 35-6-8-36
8.7	Junction of 35-6-8 & 34-6-25.3. Steep next .2 miles
8.9	Junction of 35-6-8 & 34-6-30. Terrain levels out.
10.9	Junction of 34-6-30 & 34-6-19.2
11.7	Junction of 34-6-19.2 & 34-6-20. Steep next .1 miles.
11.9	Wide area on 34-6-20 directly over Tunnel No. 9
12.0	<u>Route 1.</u> Junction of 34-6-20 & 34-6-20.3. Gate on 34-6-20.
13.8	"Y" Junction of 34-6-20 & county road.
14.5	Terminus of 34-6-20 and open scenic viewpoint.
12.0	<u>Route 2.</u> Junction of 34-6-20 & 34-6-20.3.
??	Junction of 34-6-20.3 & 34-6-20.2.
??	34-6-20.3 viewpoints through trees.
??	34-6-20.2 viewpoints through trees.

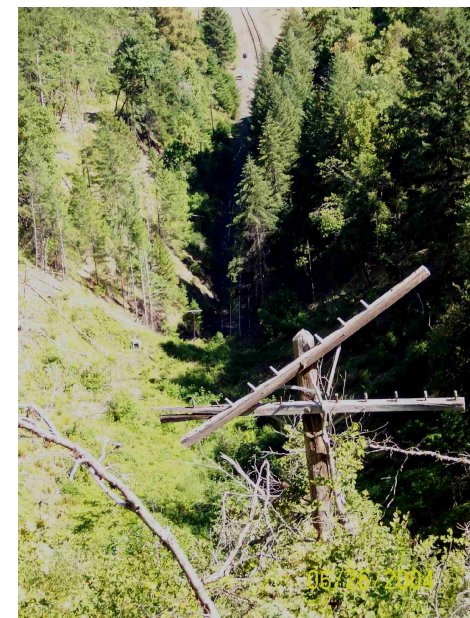
OUTDOOR RISK WARNING STATEMENT - WARNING! There is a personal risk the individual assumes anytime he ventures into the "wilds" of Hugo. Non-paved roads can be dangerous anytime, but especially in near vertical terrain (i.e., narrow, steep, curvy, blind corners, edge of cliff, poor road material, overhanging vegetation, mud holes, loose rocks, changing conditions, etc.). Besides dangerous roads there are other environmental elements to prepared for: weather, hazardous terrain, potentially dangerous plants, and critters. The big "real" common concerns are hot summer heat, ticks, poison oak, and rattlesnakes. The *Hugo Neighborhood* assumes no liability for information provided, nor any harm that may result from individuals traveling into the "wilds."

More Information

Five popular Hugo view points are:

- Pacific Highway
- Burgess Gulch
- Walker Mountain
- Quartz Creek
- Sexton Mountain Lookout

The drive from the Hugo I-5 interchange to the Quartz Creek Viewpoints is paved and rough gravel roads (two-wheel drive). The upper elevation roads can be pretty muddy during wet winter days.



Mile Post 11.9 Looking North
From Top of Tunnel No. 9

Hugo Neighborhood Association & Historical Society's Mission

This information brochure is one of a series of documents published by the Hugo Neighborhood Association & Historical Society (*Hugo Neighborhood*). It is designed to be shared with neighbors for the purpose of helping protect our rural quality of life by promoting an informed citizenry in decision-making. The *Hugo Neighborhood* is an informal nonprofit charitable and educational organization with a land use and history mission promoting the social welfare of its neighbors.

Land Use & History

The *Hugo Neighborhood's* land use mission is to promote the social welfare of the citizens of the area by working to promote Oregon Statewide Goal 1 — Citizen Involvement, and by preserving, protecting, and enhancing the livability and economic viability of its farms, forests, and rural neighbors.

Its history mission is to educate, collect, preserve, interpret, and research its local history and to encourage public interest in the history of the Hugo area.

Membership dues are \$10.00 annually and are due in January. They will be used for paper, ink, envelopes, publications and mailings. Make checks payable to the *Hugo Neighborhood* and send them our Treasurer. Send us your e-mail address if you want to know what we are doing.

Hugo Neighborhood
Email: hugo@jeffnet.org
Web Page: <http://jeffnet.org/~hugo/>

Edited by Blake & Jacque Hardwick

HNA&HS Officers

Wayne McKy, Chair
6497 Hugo Road
Grants Pass, Oregon 97526

Mike Walker, Education Chair
3388B Merlin Rd #195
Grants Pass, Oregon 97526

Hal Anthony, Outreach Chair
3995 Russell Road
Grants Pass, Oregon 97526

Jacqueline Hardwick, Treasurer
885 Red Mountain Drive
Grants Pass, Oregon 97526

Karen Rose, Web Master
575 Red Mountain Drive
Grants Pass, Oregon 97526

Brochure 4 in Scenic View Series, HNA&HS 2004 - 12
D:\...\Genealogy\Scenic_Views

Quartz Creek Viewpoints

Brochure 4 in Scenic
View Series



Northern Hugo

July 30, 2004

**Hugo Neighborhood Association &
Historical Society**